

Specification

Toning series-D560RGLWW



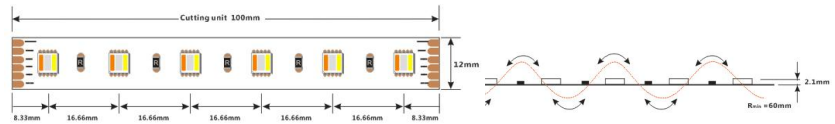
General description

- ※Five in one bulb design, more uniform light
- ※65536 colors can be achieved at the highest level
- ※High quality FPC, high thermal 3M adhesive
- ※Ta: -25~40° C; Tc: 75° C (max)



Dimensions

- Max.length:** 5000mm
- Cutting unit:** 100mm/6leds
- LED pitch:** 16.66mm
- Min. bend diameter:** Φ 60mm
- Mounting:** 3M tape
- IP:** IP33/55/65/67

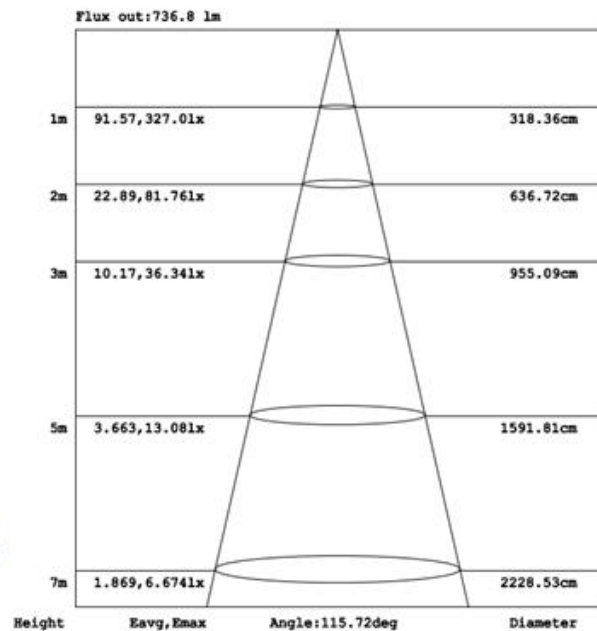
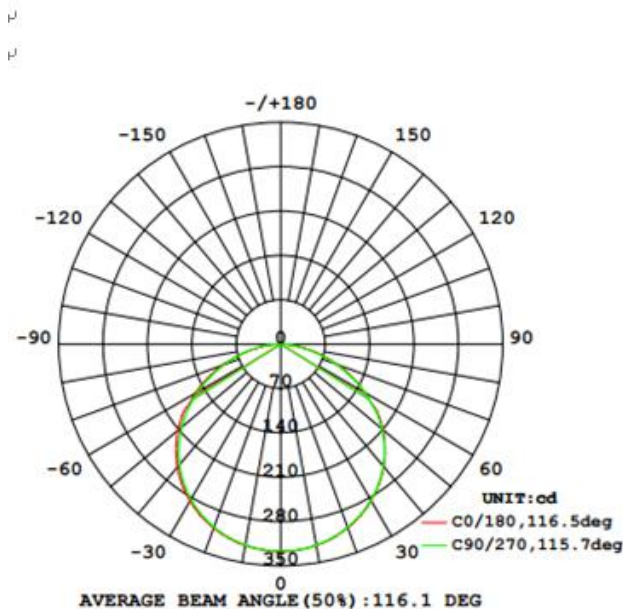


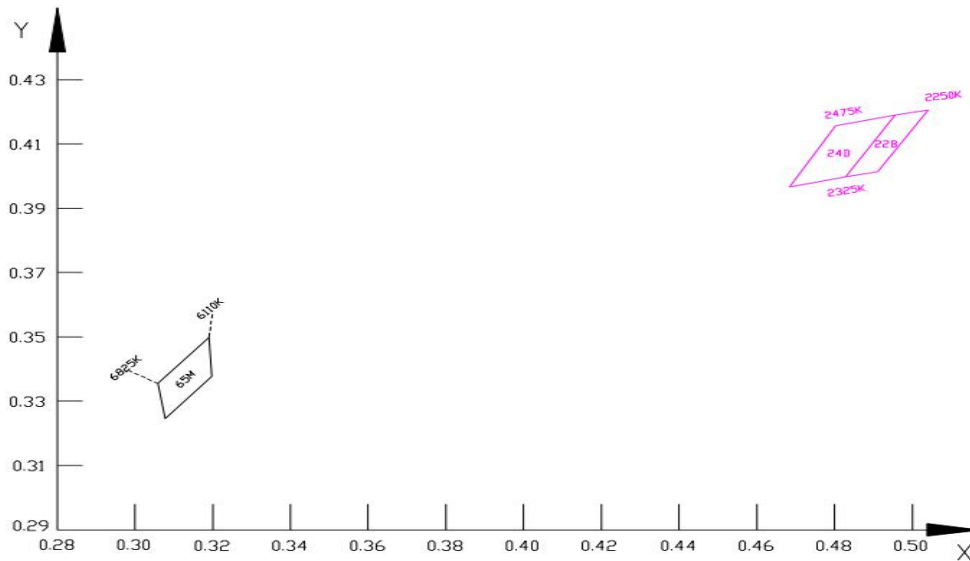
Electronic & output data

- Input voltage:** 24VDC
- Rated current:** 0.75A(1meter) /3.14A(5meter)
- Typical Power:** 18W(1meter) /75.4W(5meter)
- Power range:** 16~20W
- Max.power:** 20W (If=16.6mA)
- CRI:** /
- On-off times:** 10000 (test times)

Color	RGB+LW+W
CCT	/
Lumen	/
Lm/W	/
Energy efficiency class	/

- 1.The tolerance of output data can be vary up to 10%
- 2.the output data tested according to IES LM-79-08
- 3.the output data is based on IP33/1meter
- 4.IP protection process leads changes to size, CCT and luminous flux



BIN

Accessories Information

Type	Name	Picture	Code	Color	Protection technique	Remark
wire cable with connector	single pin,"-"shape wire connector		94.51.110000003	transparent/black	-	Wire Diameter < 2.1mm
	single pin,"T"shape wire connector		94.51.110000005	transparent/black	-	Wire Diameter < 2.1mm
	double pin,"-"shape wire connector		94.51.110000004	transparent/black	-	Wire Diameter < 2.1mm
	double pin,"T"shape wire connector		94.51.110000006	transparent/black	-	Wire Diameter < 2.1mm
Fixed parts	12mm Fixed clasp		94.19.00120003	transparent	ST/SF	-
	12mm Tube clamps		94.19.01120002	transparent	NO	-
	12mm No silicone hole plug		94.18.01120001	transparent	ST/SF	-
	Stopper glue		94.16.03010001	transparent	ST/SF	-
	Split-box		94.51.110000001	-	-	-
	Quick wiring		94.51.110000002	-	-	-

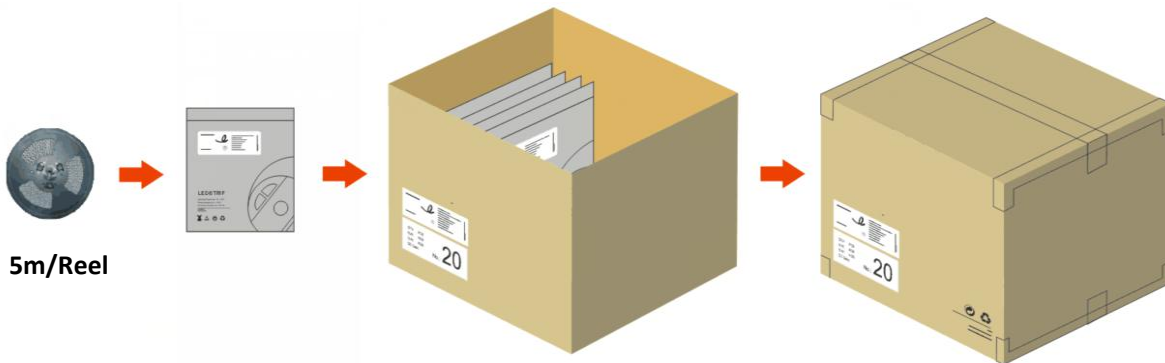
Order Code Formats

1:Category		2:LED		3:LED/m		4:Voltage		5:FPC Width		6:IP Process		7:CRI		8:CCT	
D	-	5	5050	60	60LED	24	24V	12	12mm	NO	NO	0	RGB	RGBLWW	RGBLWW
										SG	SILICONE GLUE				
										ST	SILICONE TUBE				
										SF	SILICONE FILLED				
										NA	NANO				
9:Silk Printing		10: Entery cable		11:Wire type		12:Wire length		13:Tape type		14:Label Type		15: Strip Length			
C	COLORS	S	Single	A	red and black cable	012	12cm	W	White 3M	C	COLORS	0050	0.5m		
S	customized	D	doubel	B	SM-male wire	020	20cm	Y	Yellow 3M	S	customized	0100	1m		
N	Neutral	X	Nothing	C	SM-female wire	050	50cm	R	Red tape			0200	2m		
				X	Nothing	100	100cm	X	Nothing			0500	5m		
						000	Nothing					5000	50m		

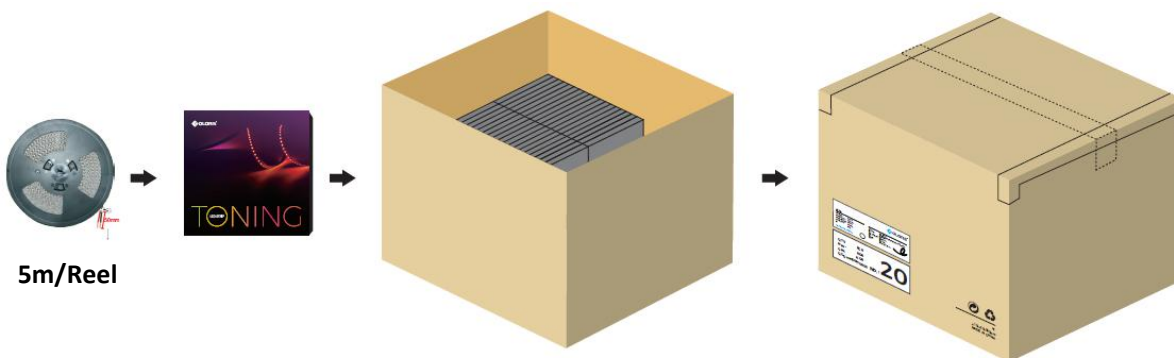
D5602412NO-0RGLWWCDA012WC0500

Packing

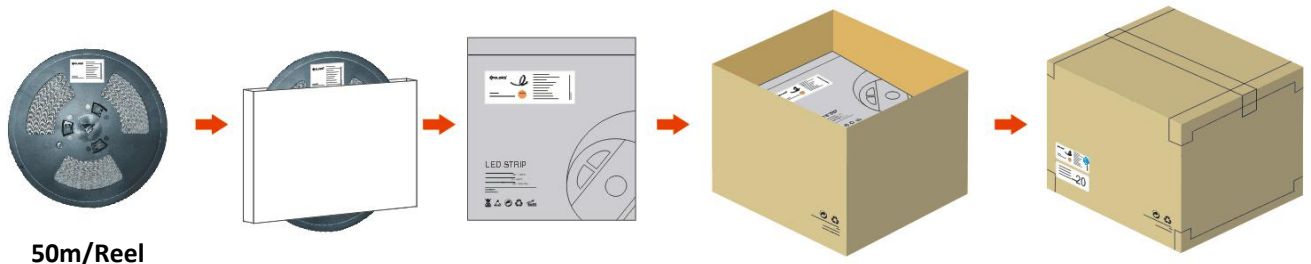
1. Non- brand of NO(IP33)/SG(IP55)/ST(IP65)/SF(IP67)/NA(IP65).



2. Brand of NO(IP33)/SG(IP55)/ST(IP65)/SF(IP67)/NA(IP65).



3. Engineering packaging of NO(IP33).



Disclaimer

- ※ Please drive the led strip with 24VDC isolated power, and the ripple of the constant voltage source should be less than 5%.
- ※ Please do not bend the strip into an arc with a diameter less than 60mm to ensure the longevity and reliability.
- ※ Do not fold it in case any damage of LED beads.
- ※ Do not pull the power wire hard to ensure the longevity. Any Crash may damage the LED light is prohibited.
- ※ Please make sure the wire is connected to the anode and cathode correctly. The power output should be consistent with the voltage of the strip to avoid damage.
- ※ LED lights should be stored in dry, sealed environment. Please only unpack it before usage. Ambient temperature: $-20\text{ }^{\circ}\text{C} \sim +40\text{ }^{\circ}\text{C}$. Storage temperature: $-0\text{ }^{\circ}\text{C} \sim +60\text{ }^{\circ}\text{C}$. Please use the strips without waterproof within indoor environment with humidity less than 70%.
- ※ Please be careful during operation. Do not touch the AC power supply in case of electric shock.
- ※ Please leave at least 20% power for the power supply during using to ensure there is enough power supply to drive the product.
- ※ Do not use any acid or alkaline adhesives to fix the product (e.g.: glass cement).

